



Apiculture Programmes

**Overview of Annual
Implementation Reports
for apiculture year 2021**



State of play – apiculture year 2021*

The Member states have notified to the Commission their

- *Number of beehives*
- *Annual reports on apiculture programmes, including their budget utilisation*

**1 August 2020 to 31 July 2021*

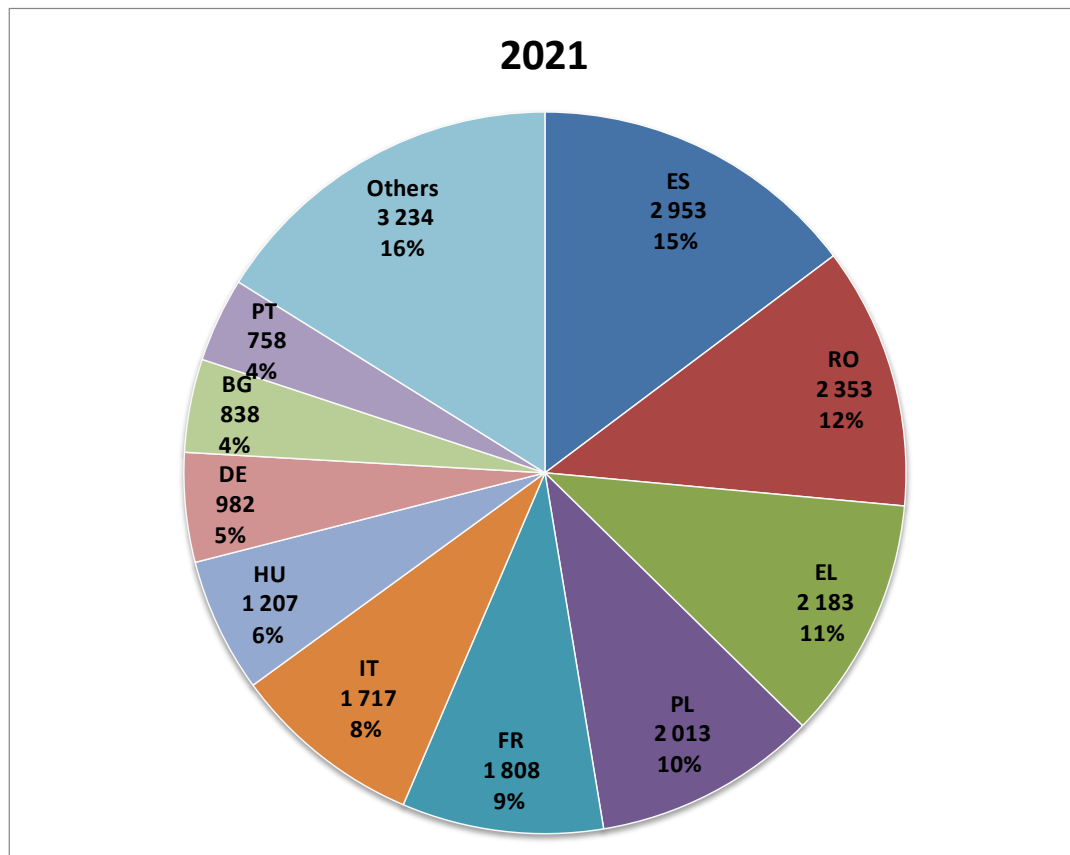
Conclusions

- In 2021 the EU had 20.0 million beehives, an increase of +5.9 % compared to 2020
- In 2021 the average utilisation of the available funding was 78%

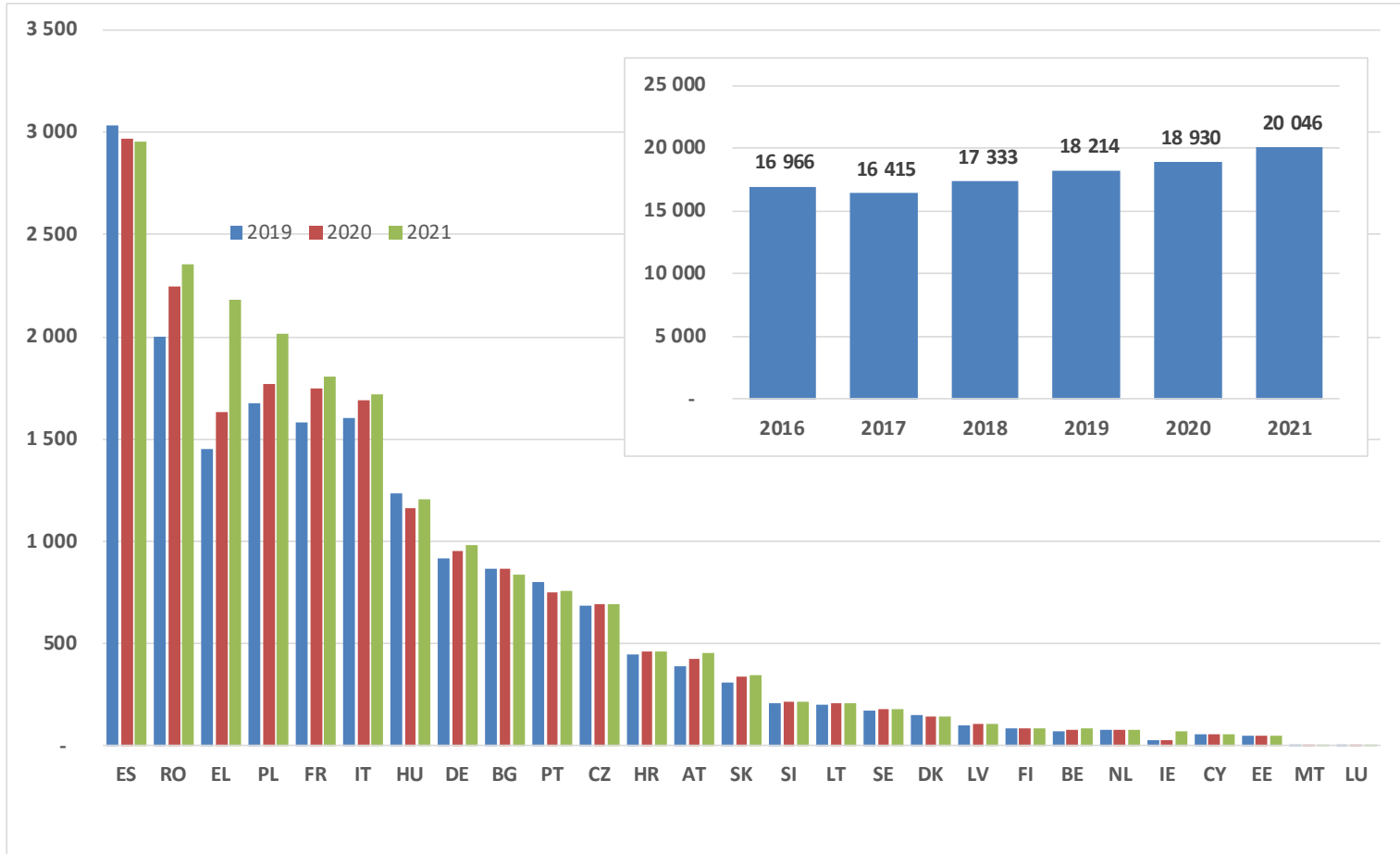
Number (in thousand) and share of beehives per MS in 2021



In thousand hives	2020	2021		
ES	2 967	2 953	↓	-0.5%
RO	2 247	2 353	↑	+4.7%
EL	1 631	2 183	↑	+33.8%
PL	1 766	2 013	↑	+14.0%
FR	1 751	1 808	↑	+3.3%
IT	1 687	1 717	↑	+1.8%
HU	1 163	1 207	↑	+3.8%
DE	951	982	↑	+3.3%
BG	863	838	↓	-2.9%
PT	754	758	↑	+0.5%
CZ	694	695	↑	+0.1%
HR	461	460	↓	-0.1%
AT	426	456	↑	+7.0%
SK	335	344	↑	+2.6%
SI	214	213	↓	-0.2%
LT	209	209	→	+0.0%
SE	179	179	→	+0.0%
DK	144	140	↓	-2.6%
LV	104	104	↓	-0.0%
FI	82	86	↑	+4.0%
BE	76	82	↑	+8.1%
NL	80	78	↓	-2.3%
IE	27	74	↑	+172.1%
CY	58	55	↓	-5.8%
EE	48	50	↑	+4.8%
MT	5	6	↑	+17.6%
LU	8	3	↓	-63.3%
EU	18 930	20 046	↑	+5.9%



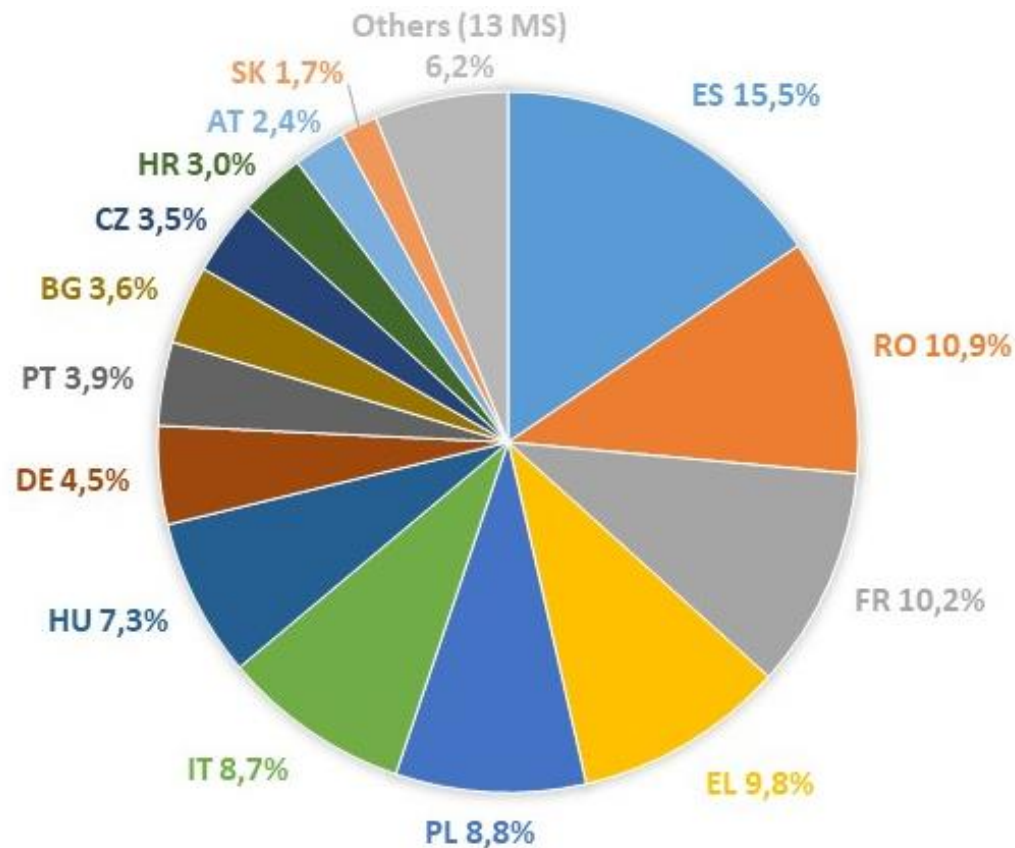
Evolution of the number of hives (in thousand)



EU Contribution to the National Agriculture Programmes 2020-2022 by Member State (in EUR)

	2020	2021	2022
BE	160.330	422.967	422.967
BG	1.635.982	2.063.885	2.063.885
CZ	1.266.168	2.121.528	2.121.528
DK	175.240	295.539	295.539
DE	1.656.621	2.790.875	2.790.875
EE	100.000	140.473	140.473
IE	45.000	61.640	61.640
EL	3.235.867	6.162.645	6.162.645
ES	5.634.999	9.559.944	9.559.944
FR	3.454.130	6.419.062	6.419.062
HR	1.000.850	1.913.290	1.913.290
IT	3.544.718	5.166.537	5.166.537
CY	100.000	169.653	169.653
LV	207.500	328.804	328.804
LT	486.900	549.828	549.828
LU	15.337	30.621	30.621
HU	3.120.330	4.271.227	4.271.227
MT	8.333	14.137	14.137
NL	190.000	295.172	295.172
AT	880.301	1.477.188	1.477.188
PL	3.937.807	5.024.968	5.024.968
PT	1.750.000	2.204.232	2.204.232
RO	5.248.731	6.081.630	6.081.630
SI	380.000	649.455	649.455
SK	734.909	999.973	999.973
FI	140.500	196.182	196.182
SE	330.857	588.545	588.545
EU27	39.441.410	60.000.000	60.000.000

EU Budget Allocation by Member State for the Apiculture Programmes 2020-2022





Apiculture Programme Measures*

- *Measure A: **Technical Assistance***
- *Measure B: **Combatting Beehive Invaders***
- *Measure C: **Rationalisation of Transhumance***
- *Measure D: **Analyses of Apiculture Products***
- *Measure E: **Restocking of Hives***
- *Measure F: **Applied Research***
- *Measure G: **Market Monitoring***
- *Measure H: **Product Improvement***

*According to Art. 55 of REGULATION (EU) No 1308/2013



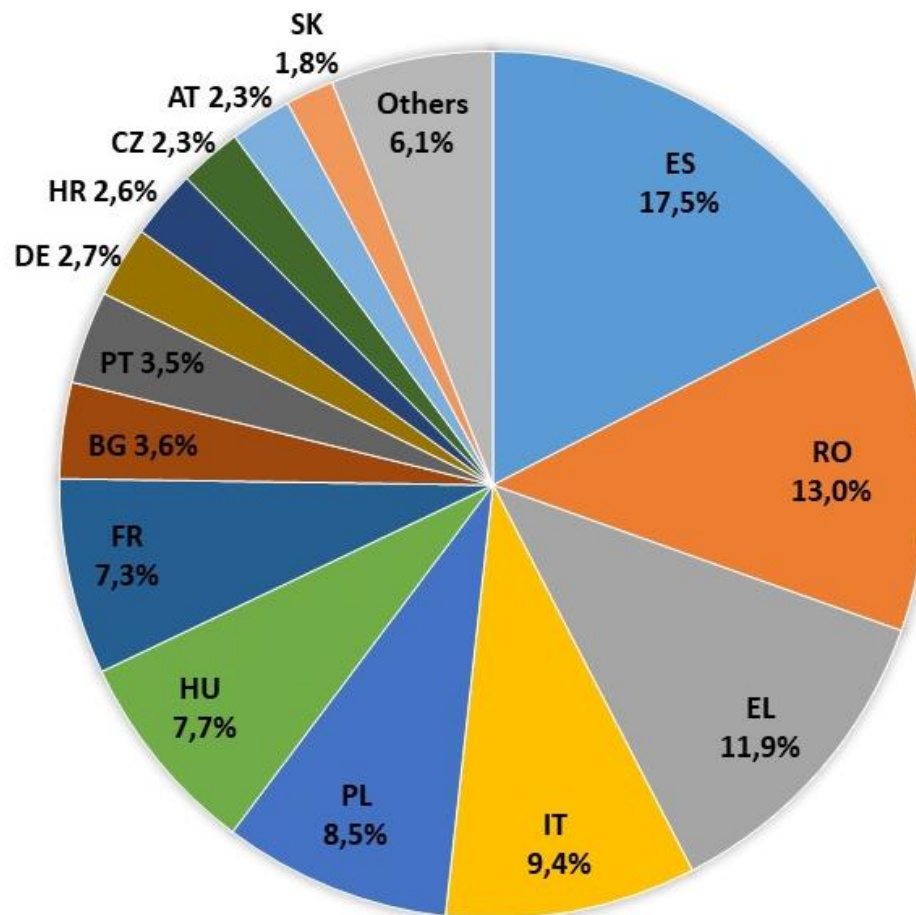
European
Commission

Expenditures for the NAPs in 2021 according to the communications notified by MS

	Total Public Expenditures in 2021 (EU + MS)								
	A	B	C	D	E	F	G	H	Total
BE	199.977	78.974	15.686	317.851	185.510	0	3.800	0	801.798
BG	1.602.577	251.959	55.588	22.559	1.414.974	0	0	0	3.347.658
CZ	1.375.610	526.162	91.728	14.785	176.938	0	0	0	2.185.223
DK	45.769	121.928	0	0	0	0	0	54.164	221.862
DE	1.226.668	282.182	17.720	286.192	9.200	664.000	0	0	2.485.962
EE	122.925	17.755	0	32.954	0	0	7.500	0	181.134
IE	0	0	0	0	0	88.188	0	0	88.188
EL	974.121	69.600	9.899.175	124.984	0	104.314	0	0	11.172.193
ES	1.629.144	8.418.674	5.346.069	267.377	183.822	130.111	0	349.993	16.325.189
FR	2.692.187	619.552	919.789	51.736	2.278.095	189.948	0	88.317	6.839.624
HR	1.227.587	483.076	240.948	2.855	372.169	41.417	0	31.780	2.399.832
IT	3.871.427	2.245.744	974.839	225.968	993.814	308.892	72.000	62.272	8.754.956
CY	38.000	146.997	0	365	136.519	0	0	0	321.881
LV	200.848	55.498	0	0	63.350	32.104	9.810	53.029	414.639
LT	35.840	202.704	41.253	5.411	217.640	124.327	10.000	210.693	847.868
LU	34.782	4.915	0	0	0	0	4.750	0	44.447
HU	1.854.573	3.110.380	1.034.194	118.981	835.648	211.615	0	6.692	7.172.083
MT	273	22.202	17	0	5.782	0	0	0	28.274
NL	0	402.269	0	0	0	0	0	0	402.269
AT	1.266.619	59.630	110.319	554.614	116.098	48.904	0	0	2.156.184
PL	3.447.468	2.820.969	320.020	0	1.321.829	0	0	45.467	7.955.754
PT	819.574	2.082.330	149.023	9.382	15.975	120.000	0	48.191	3.244.475
RO	202.656	2.436.430	3.083.856	0	6.314.954	0	122.408	0	12.160.304
SI	433.519	93.044	159.042	41.734	132.826	140.205	0	0	1.000.370
SK	914.640	619.498	116.437	2.117	15.815	16.233	0	0	1.684.739
FI	120.020	12.643	18.173	40.359	27.616	44.006	7.892	11.354	282.063
SE	427.090	130.165	0	122.567	93.582	225.486	28.088	0	1.026.978
EU27	24.763.895	25.315.279	22.593.875	2.242.790	14.912.156	2.489.750	139.090	1.089.112	93.545.947

	EU contribution in 2021								
	A	B	C	D	E	F	G	H	Total
BE	99.988	39.487	7.843	158.925	92.755	0	1.900	0	400.899
BG	801.289	125.980	27.794	11.279	707.487	0	0	0	1.673.829
CZ	687.805	263.081	45.864	7.393	88.469	0	0	0	1.092.611
DK	22.885	60.964	0	0	0	0	0	27.082	110.931
DE	613.334	141.091	8.860	143.096	4.600	332.000	0	0	1.242.981
EE	61.462	8.878	0	16.477	0	0	3.750	0	90.567
IE	0	0	0	0	0	44.094	0	0	44.094
EL	487.060	34.800	4.949.587	62.492	0	52.157	0	0	5.586.097
ES	814.572	4.209.337	2.673.035	133.688	91.911	65.055	0	174.996	8.162.594
FR	1.346.094	309.776	459.895	25.868	1.139.048	94.974	0	44.159	3.419.812
HR	613.794	241.538	120.474	1.428	186.084	20.709	0	15.890	1.199.916
IT	1.935.714	1.122.872	487.419	112.984	496.907	154.446	36.000	31.136	4.377.478
CY	19.000	73.498	0	183	68.259	0	0	0	160.940
LV	100.424	27.749	0	0	31.675	16.052	4.905	26.515	207.320
LT	17.920	101.352	20.627	2.706	108.820	62.164	5.000	105.347	423.934
LU	17.391	2.457	0	0	0	0	0	2.375	22.224
HU	927.287	1.555.190	517.097	59.491	417.824	105.808	0	3.346	3.586.042
MT	136	11.101	8	0	2.891	0	0	0	14.137
NL	0	201.135	0	0	0	0	0	0	201.135
AT	633.309	29.815	55.160	277.307	58.049	24.452	0	0	1.078.092
PL	1.723.734	1.410.484	160.010	0	660.915	0	0	22.734	3.977.877
PT	409.787	1.041.165	74.511	4.691	7.988	60.000	0	24.096	1.622.238
RO	101.328	1.218.215	1.541.928	0	3.157.477	0	0	61.204	6.080.152
SI	216.759	46.522	79.521	20.867	66.413	70.103	0	0	500.185
SK	457.320	309.749	58.218	1.058	7.908	8.117	0	0	842.370
FI	60.010	6.321	9.086	20.179	13.808	22.003	3.946	5.677	141.031
SE	213.545	65.082	0	61.284	46.791	112.743	14.044	0	513.489
EU27	12.381.947	12.657.640	11.296.938	1.121.395	7.456.078	1.244.875	69.545	544.556	46.772.973

Member states' share of expenditure in 2021



Utilisation of the EUR 120 million total* available

- 2 MS = 100%
- 3 MS = 90%-99%
- 6 MS = 80%-90%
- 8 MS = 70%-80%
- 4 MS = 60%-70%
- 4 MS < 60%

*includes EU and MS contribution 50/50

	2021		
	Expenditure	Budget	% Utilisation
BE	801.798	845.934	95
BG	3.347.658	4.127.770	81
CZ	2.185.223	4.243.056	52
DK	221.862	591.078	38
DE	2.485.962	5.581.750	45
EE	181.134	280.946	64
IE	88.188	123.280	72
EL	11.172.193	12.325.290	91
ES	16.325.189	19.119.888	85
FR	6.839.624	12.838.124	53
HR	2.399.832	3.826.580	63
IT	8.754.956	10.333.074	85
CY	321.881	339.306	95
LV	414.639	657.608	63
LT	847.868	1.099.656	77
LU	44.447	61.242	73
HU	7.172.083	8.542.454	84
MT	28.274	28.274	100
NL	402.269	590.344	68
AT	2.156.184	2.954.376	73
PL	7.955.754	10.049.936	79
PT	3.244.475	4.408.464	74
RO	12.160.304	12.163.260	100
SI	1.000.370	1.298.910	77
SK	1.684.739	1.999.946	84
FI	282.063	392.364	72
SE	1.026.978	1.177.090	87
EU27	93.545.947	120.000.000	78%

Source: MS notifications

Number of Member States by type of measure

Measure type	Number of MS*
A - Technical Assistance	25
B - Combatting Beehive Invaders	26
C - Rationalisation of transhumance	19
D - Analyses of Apiculture Products	19
E - Restocking of Hives	21
F - Applied Research	16
G - Market Monitoring	7
H - Product Improvement	13

Source: MS notifications

**Number of MS that have at least one measure in their NAP falling under that type of measure*

Expenditures of MS by type of measure in 2021

